

A YEAR OF

Reconnecting

Camp Fire National Headquarters
2020-2021 Annual Report



Camp Fire

Light the fire within

Letter from Greg:

While the pandemic raged on and impacted our ability to serve as many young people and families in person as previous years, our network kept showing up for their communities. It didn't go unnoticed. Our biggest funders quickly removed restrictions on existing grants to provide extra support to the organization and to relieve some stress as we navigated the uncertainty of COVID-19. Margaret A. Cargill Philanthropies gave additional money. The majority of Camp Fire councils received PPP loans. And we've continued to focus on keeping expenses to a minimum so we can be good stewards of our resources. Our organization is moving forward.

During the past year, we've also continued to work through our 18-month strategic plan and remain dedicated to and excited for that work: advancing diversity, equity, inclusion, and access, engaging in actively antiracist practices, addressing and ending cultural appropriation; honoring the power of young people with meaningful participation in decision-making; and promoting environmental stewardship and action.

We've also finished a yearlong process of stakeholder input to reframe our Camp Fire story so we can more effectively communicate our impact. The result? A new Mission, Vision, Values, and Why.

Growing up is hard. That's why:

Our Mission:

**CAMP FIRE CONNECTS YOUNG PEOPLE
TO THE OUTDOORS, TO OTHERS, AND TO THEMSELVES.**

Our Vision:

**We envision a world where all young people thrive
and have equitable opportunities for:**

- **Self-Discovery:** All young people find their spark, lift their voice, and discover who they are;
- **Community Connection:** All young people find, build, and contribute to their community; they develop meaningful relationships with supportive adults and peers; they feel seen, heard, accepted, supported, and affirmed for who they are today, and who they will be in the future;
- **Engagement with Nature:** All young people experience the power and awe of the outdoors; they learn to respect, love, and care for our world.

Values:

We are a values-led organization, from 1910 to today:

WE ARE INCLUSIVE.

WE GET OUTDOORS.

WE PRIORITIZE RELATIONSHIPS.

WE HONOR THE POWER OF YOUNG PEOPLE.

WE ARE LEARNERS.

WE TAKE ACTION.

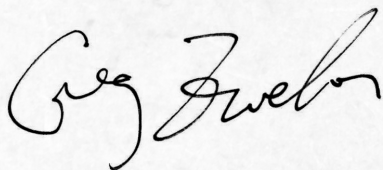
WE ARE RESPONSIVE.

WE PURSUE IMPACT.

These core tenets of our organization not only reflect who we are and who we've been, but also where we are going, and our unique position in the world – why all young people need Camp Fire.

We remain deeply grateful to you, and our dedicated partners, donors, and funders, who are committed to seeing all young people thrive. We are extremely hopeful and excited about the future. Our financials in this report reflect that hope, and we are driven by the new opportunities on the horizon.

Wishing you Work Health Love,



Greg Zweber,
President & CEO,
Camp Fire National Headquarters



Financials

Financial information is based on the audited financial statements for the year that ended June 30, 2021. The complete financial statements have been determined to present fairly, in all material respects, the financial position of Camp Fire as of June 30, 2021, and the changes in its net assets and its cash flows for the year then ended in accordance with accounting principles generally accepted in the United States of America.

The financial statements do not include the financial positions or activities of the local councils or other affiliate organizations. The total revenue generated by the chartered councils aggregate to approximately \$47 million.

Audited financial statements are available at www.campfire.org, or by contacting Camp Fire National Headquarters Finance Department, 1801 Main St., Suite 200, Kansas City, Missouri 64108.

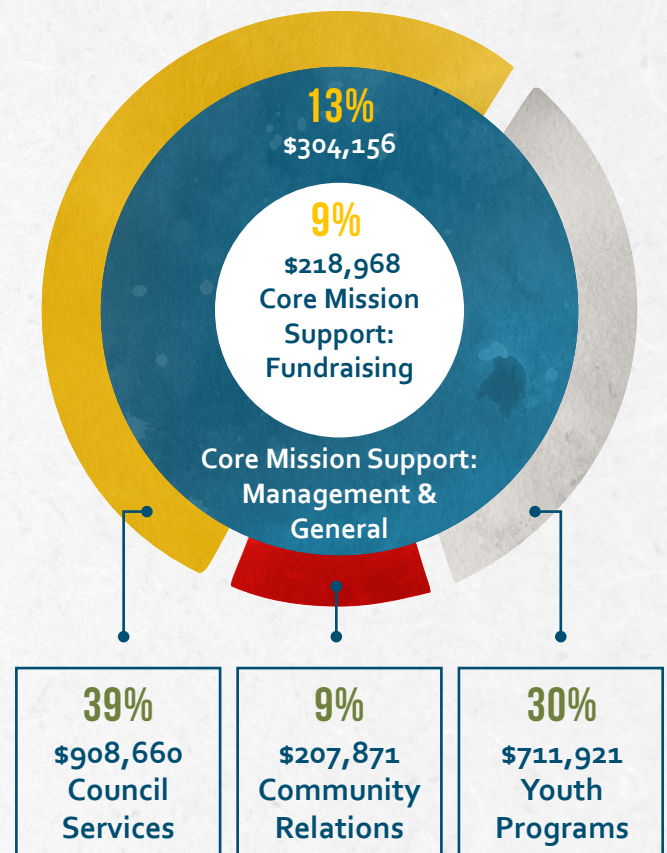
STATEMENT OF FINANCIAL POSITION

June 30, 2021

Total Current Assets	\$1,445,729
Total Long-Term Assets	\$1,270,702
Total Assets	\$2,716,431
Total Liabilities	\$591,364
Net Assets	
Without Donor Restrictions	\$737,853
With Donor Restrictions	\$1,387,214
Total Net Assets	\$2,125,067
Total Liabilities and Net Assets	\$2,716,431

FUNCTIONAL EXPENSES

For the year ended June 30, 2021



STATEMENT OF ACTIVITIES

For year ended June 30, 2021

	Without Donor Restrictions	With Donor Restrictions	Total
Total Revenues, Gains, and Public Support	\$2,790,778	-\$74,043	\$2,716,735
Total Expenses	\$2,351,576	-	\$2,351,576
Change in Net Assets Before Discontinued Operations	\$439,202	-\$74,043	\$365,159
Discontinued Operations	-\$58,823	-\$65,527	-\$124,350
Change in Net Assets	\$380,379	-\$139,570	\$240,809



2020-2021 Contributions

(RECEIVED BETWEEN JULY 1, 2020 AND JUNE 30, 2021)

WE SALUTE OUR DONORS

On behalf of the youth and families who have benefited by Camp Fire over the last year thank you for supporting us in fulfilling our Promise to provide our youth the opportunity to *find their spark, lift their voice and discover who they are.*

\$100,000+

Margaret A. Cargill Philanthropies

\$50,000-\$99,999

Estate of Sharon Gander

\$20,000-\$49,999

Anonymous
James Daniel Humphrey Foundation
Greater Kansas City Community Foundation

\$10,000-\$19,999

Anonymous
Greg and Nicole Zweber
Dave Albano
Ken Schoeneck

\$2,500-\$9,999

Search Institute
Della Waldram Trust
Jeanetta Darno
Michael Fox
George Wakefield Trust
Melanie Herman
Facebook
Dian Moore
Sonya Richburg
YourCause, LLC

\$1,000-\$2,499

Government Employees Health Association Inc.
Rosemary Pezzuto
Julia Fleenor
Cathy Tisdale
Shawna Fleenor
Lathrop GPM

\$250-\$499

Angelica Ramirez
Rania Anderson
Catharine Slover
Margaret Wilmoth
Bobbie Henderson
Mara Cohara
Shawna Rosenzweig



GIFTS UP TO \$249

AAlita Ostapkovich
Amanda Bergmann
Amazon Smile Foundation
America's Charities
Andrea Woods
Anne Vigliaturo
Anonymous
Ariel Rose
Barbara George
Barbara Simmons
Barbara Young
Ben Matthews
Ben Speer
Betty Gilson
Brandon Willis
Camilla Willoughby
Campfire Coffee
Carol Jo Hargreaves
Charity Gift Certificates
Chelsea Monroe
Chris Wagner
Clay Patterson
Connie Dresie
Daniel Dorsey
Derek Burton
Dominique Colantuoni
Dori Tate
Eileen Kane
Elizabeth Campbell
Eric Munkachy
Eric Neishloss
Erin Risner
Gail Glamm
Greg Booth
Hannah Patterson
Hunter Sanders
James Wunderle
Janel Fausti
Jason Pearce
Jeff Weeden

Jerilyn Johnson
Jerry Patterson
Jewel Cowart
Joan Groves
Joan Hei
JoAnn Copperud
Joanna Reser
Joanne and Stephen Burns
John and Anne Edgecomb
John Hobbs
Joyce Kennedy
Julia Wright (in honor of Avis White)
Karen Luker
Kelly Miller
KPMG LLP
Kristin Ethier
Larry Barber
LaShee Thomas
Laura Gowans
Leah Schroeder
Leanna Geosling
Leila Bonner
Lila McMechan
Linda Harris
Ingrid Becher
Lois Davis
Lucinda Watson
MaKaylee Dunbar
Marcia Pomeroy
Markos Cela
Mary Alice Sanguinetti
Mary Morris
Mary Patterson
Mary Witt
Mauricio Garcia Underbrink
Mebie Thompson
Melanie McCall
Michael Lemon
Mike Radosevich

Nancy Austin
National Education Association
Network for Good
Nicole Nicoll
Nicole Pate
Nikki Cropp
Nikki McClaran
Pamela Risner
Patti Potter
Pierre and Ellen Rodgers
Richard Huxford
Rochelle Karp
Ryan Hassen
Sandra Fuller
Sarah Kittle
Sheri Hemby
Sherida Ferguson
Sonja Shanahan
Steve Culbertson
Sue Baltusis
T. J. Luty
Tamara Demetroulis
Tanner Smith
Teresa Woods
Tess Mcelfresh
The Benevity Community Impact
Thomas Fritzsche
Todd Hein
Tracey Swan
Urban Greens
Wallace Klein
Walter Swanson
Whitney Barnes
Will Nicoll
William Morgan
Women's Caucus

PLANNED GIFTS

The Langdon Legacy Society Honoring the legacy of William Chauncy Langdon, one of Camp Fire's founders, this society recognizes those individuals who have remembered Camp Fire in their will or estate plan. We honor the memory and gratefully acknowledge the legacy of the following individuals, whose caring for Camp Fire survives them still today through their estate gifts.

James Humphrey Wilkinson Perpetual Trust

Camp Fire is thankful for the foresight of caring indicated by the following individuals who have shared that Camp Fire is included in their legacy plans:

Robert L. Bobar

Ann E. Corwell

Abelardo and Deborah G. Curras

Frank and Susan Finneran

Sara W. Hardin

Virginia M. Johnson

Dr. Faith W. LaVelle

Dorothy Liu

Arlene Meehan

Marion Noel

Dolores C. Owens Trust

Dr. Roberta van der Voort





LOOKING AHEAD

Young people are craving deep, real connections with people who see them for who they are. Camp Fire connects them to the outdoors, to others, and to themselves. Donate to make connection possible and join our list of supporters today: CampFire.org/Donate.



OUR STATEMENT OF INCLUSION

Camp Fire believes in the dignity and the intrinsic worth of every human being. We welcome, affirm, and support young people and adults of all abilities and disabilities, experiences, races, ethnicities, socio-economic backgrounds, sexual orientations, gender identities and expressions, religion and non-religion, citizenship and immigration status, and any other category people use to define themselves or others. We strive to create safe and inclusive environments that celebrate diversity and foster positive relationships.

BOARD OF DIRECTORS

Chair – Sonya Richburg
Vice Chair – Jeanetta Darno
Secretary – Mara Cohara
Treasurer – Ken Schoeneck
Steve Franke*
Melanie Herman
McKenzie Napier
Rick Taylor
Dave Albano
Nicole Pate, YAC Chair

* Completed term of service within the fiscal year.

CONNECT WITH US!

-  [CAMP FIRE](#)
-  [@CAMPFIREHQ](#)
-  [@CAMPFIREHQ](#)
-  [CAMP FIRE](#)
-  [CAMP FIRE NATIONAL HEADQUARTERS](#)